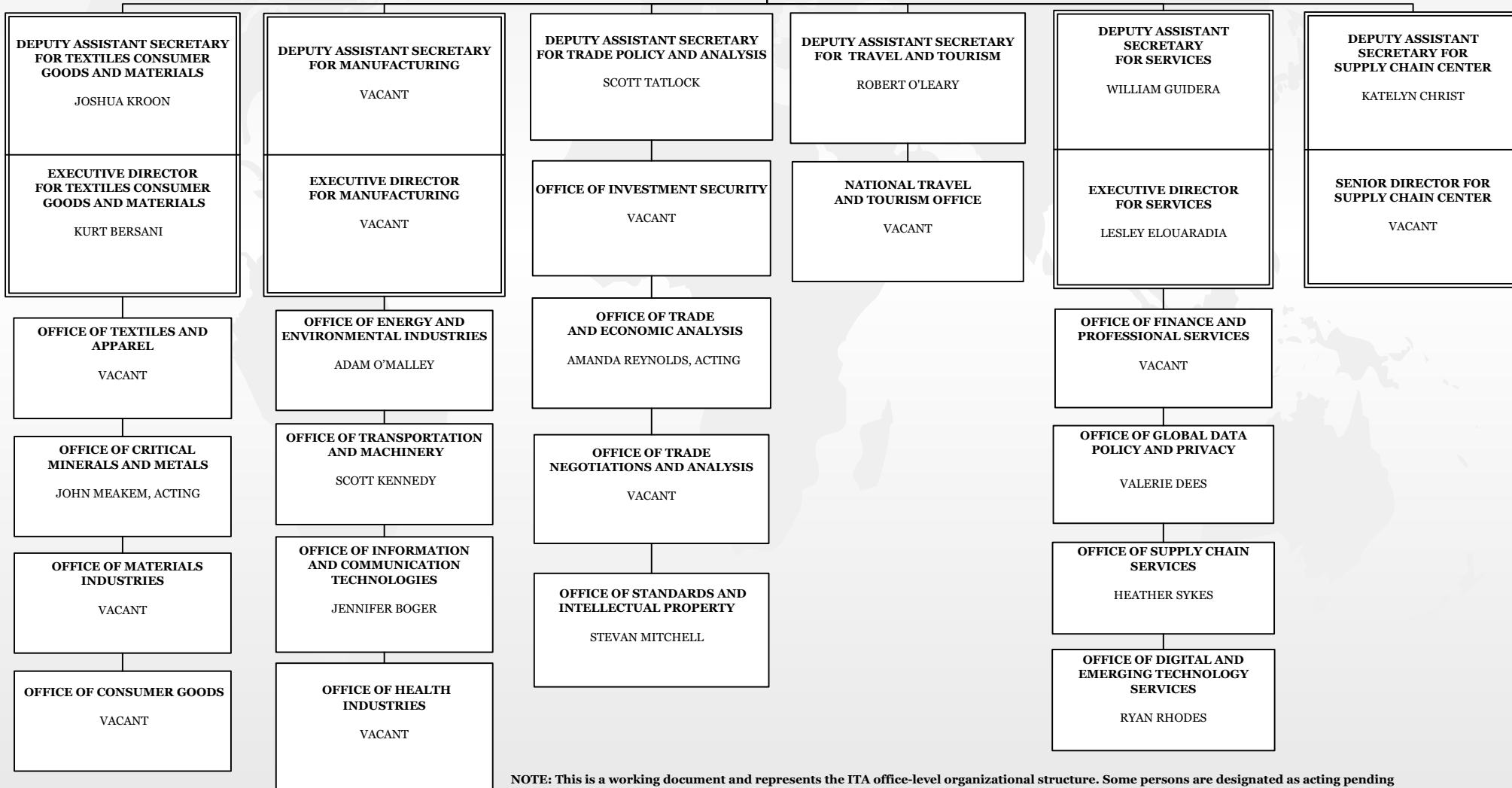
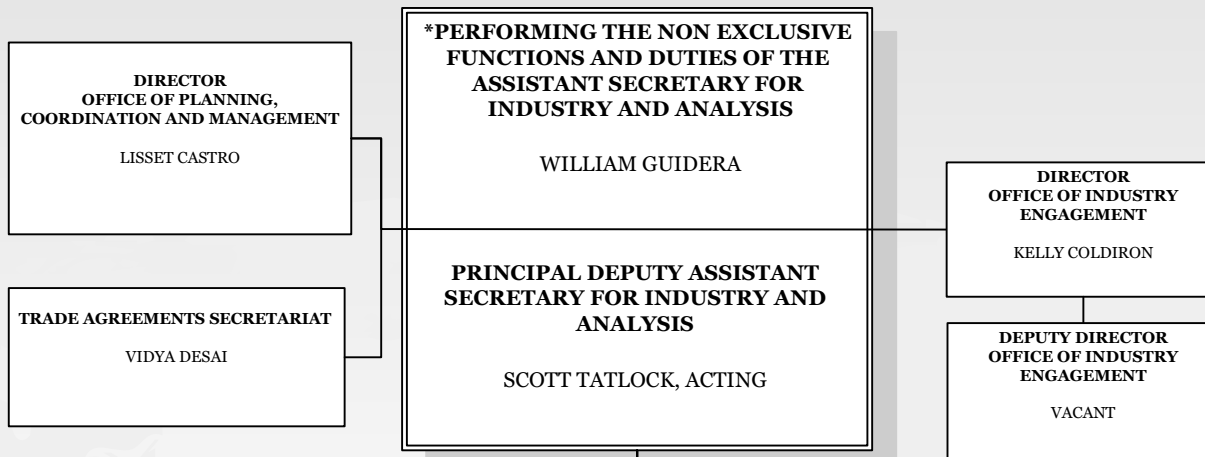


**INDUSTRY
AND
ANALYSIS**

1/15/2026



NOTE: This is a working document and represents the ITA office-level organizational structure. Some persons are designated as acting pending the completion of personnel actions. This chart depicts only persons for which personnel actions have been submitted.

SOURCE: Chief Financial and Administrative Office/Office of the Human Capital Executive