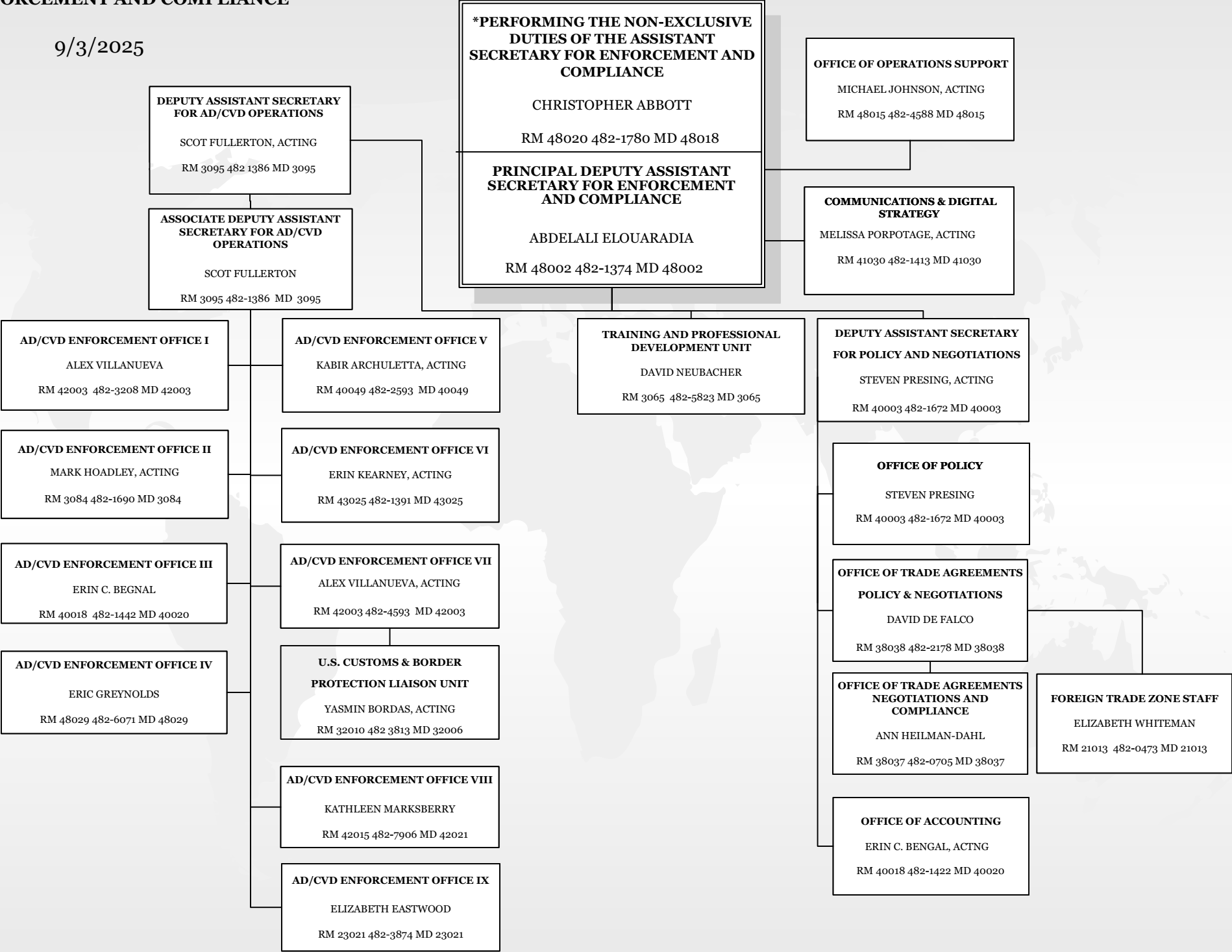


ENFORCEMENT AND COMPLIANCE

9/3/2025



NOTE: This is a working document and represents the ITA office-level organizational structure. Some persons are designated as acting pending the completion of personnel actions. This chart depicts only persons for which personnel actions have been submitted.

SOURCE: Office of the Chief Financial and Administrative Officer, Office of the Human Capital Executive