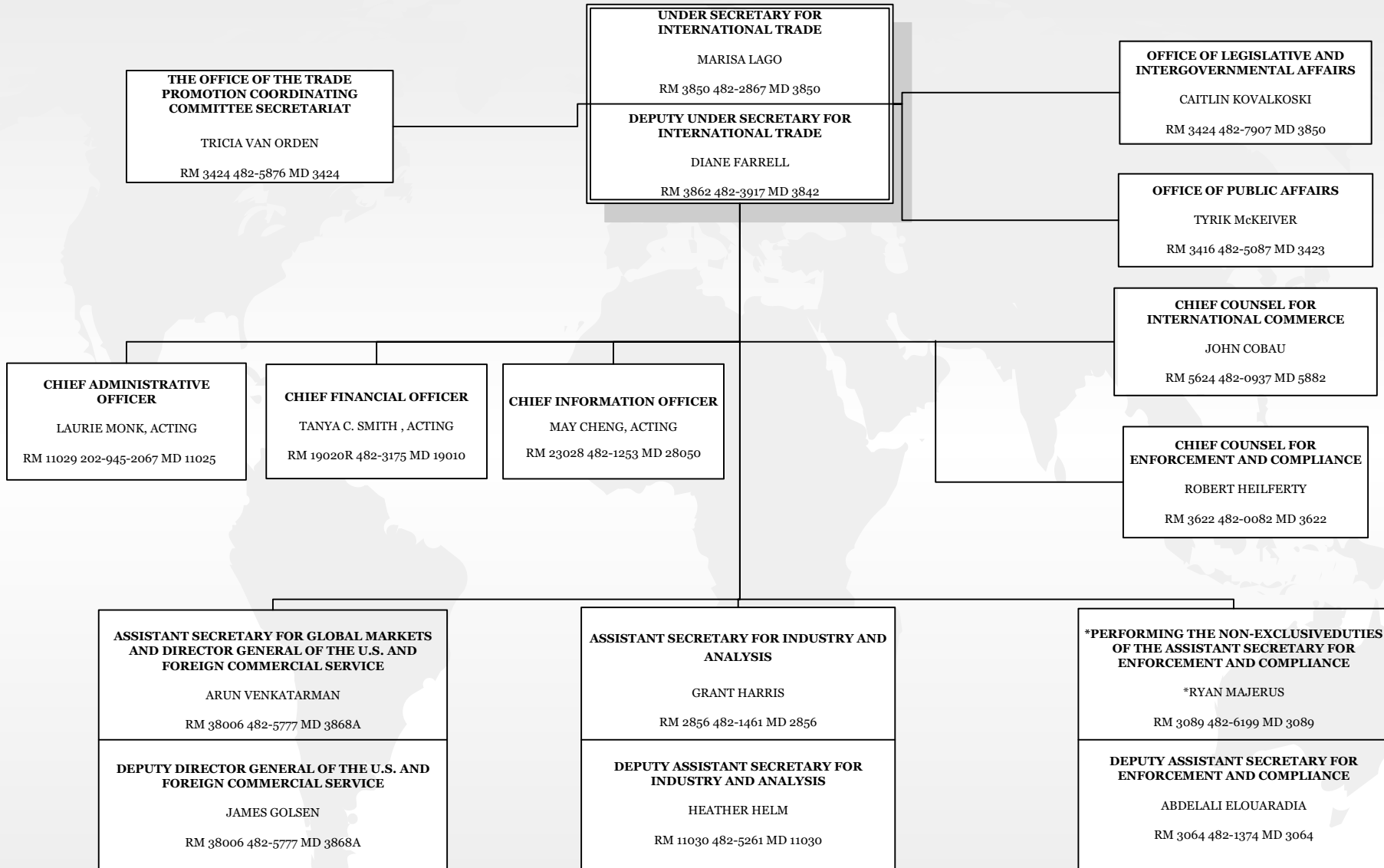


**U.S. DEPARTMENT OF COMMERCE  
INTERNATIONAL TRADE ADMINISTRATION  
WORK REFERENCE CHART**

06/27/2024



**NOTE:** This is a working document and represents the ITA office-level organizational structure. Some persons are designated as acting pending the completion of personnel actions. This chart depicts only persons for which personnel actions have been submitted.

**SOURCE:** Chief Financial and Administrative Officer, Management Operations Division