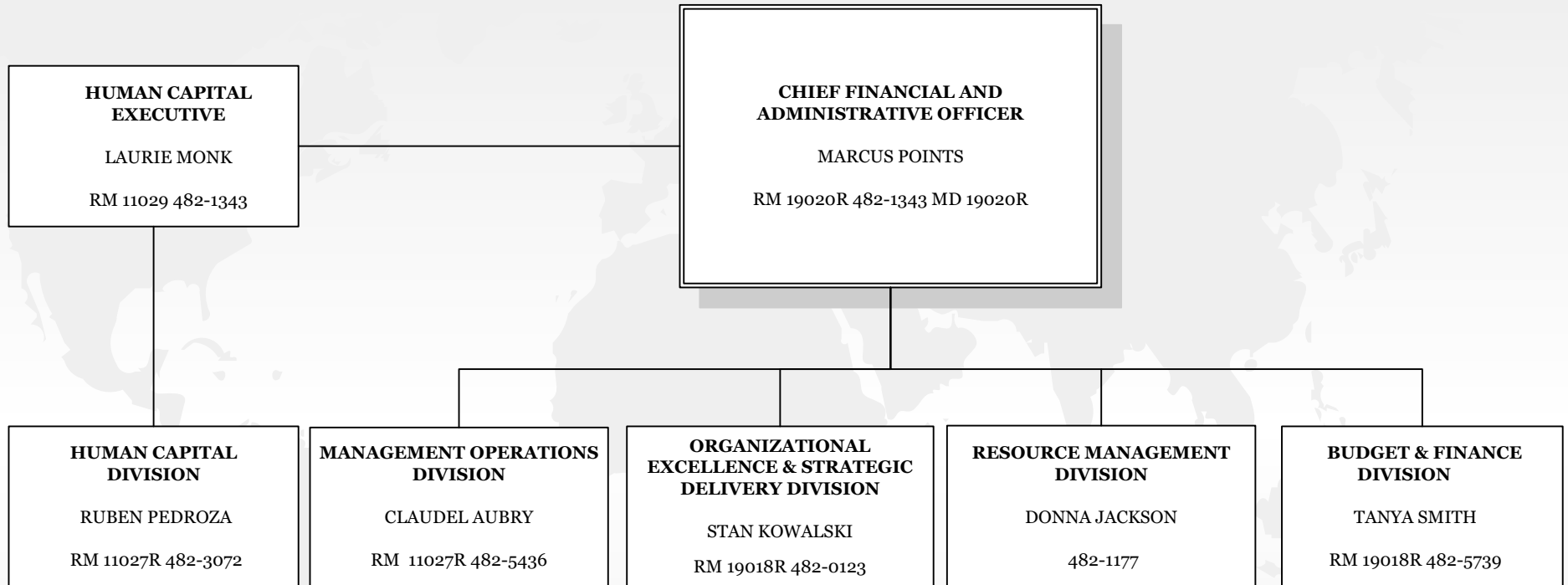


**CHIEF FINANCIAL AND ADMINISTRATIVE
OFFICER**

12/4/24



NOTE: This is a working document and represents the ITA office-level organizational structure. Some persons are designated as acting pending the completion of personnel actions. This chart depicts only persons for which personnel actions have been submitted.

SOURCE: Chief Financial Administrative Officer, Management Operations Division