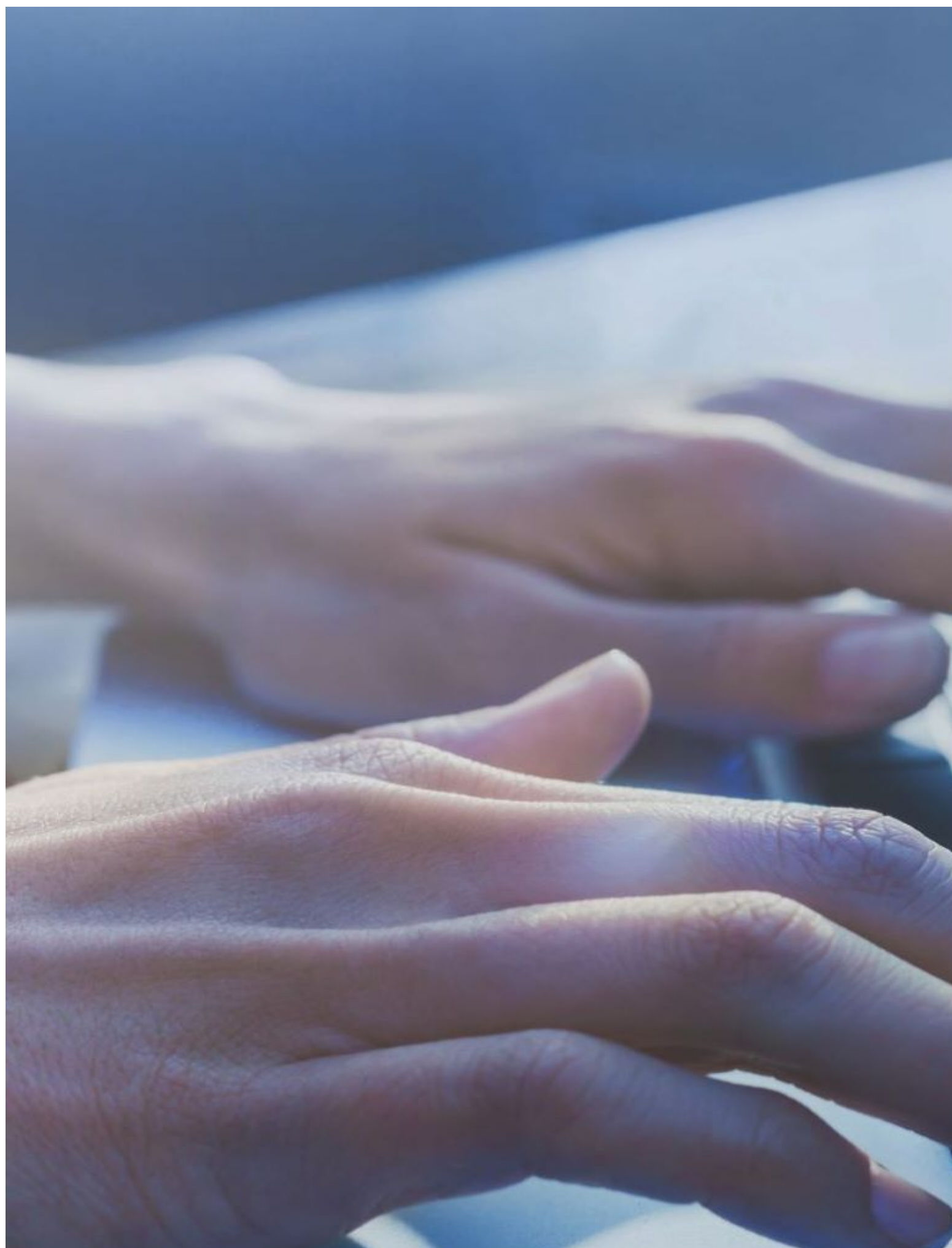




U.S. Antidumping and Countervailing Duties

Information and Resources for U.S. Trade Remedy Laws and Ongoing Proceedings.



AD/CVD FAQs

Get the answers to the most commonly asked questions.

[AD/CVD FAQs](#)





Final Affirmative Determinations in the Antidumping and Countervailing Duty Investigations of Overhead Door Counterbalance Torsion Springs from the People’s Republic of China

Final Affirmative Determinations in the Antidumping and Countervailing Duty Investigations of Overhead Door Counterbalance Torsion Springs from the People’s Republic of China

On August 12, 2025, the U.S. Department of Commerce (Commerce) announced its final affirmative determinations in the antidumping duty (AD) and countervailing duty (CVD) investigations of overhead door counterbalance torsion springs (overhead door springs) from the People’s Republic of China (China).

Final Dumping Margins

China

Producer	Exporter	Weighted- Average Dumping Rate Margin (percent)	Cash Deposit Rate (Adjusted for Subsidy Offset(s)) (percent)
Suzhou Shunchi Hardware Co., Ltd.	Chi Hardware Corporation Limited	734.33	723.79
Wuxi Xinhui Spring Factory	Chi Hardware Corporation Limited	734.33	723.79
Hangzhou Fuxing Spring Co., Ltd.	Chi Hardware Corporation Limited	734.33	723.79

Producer	Exporter	Weighted- Average Dumping Rate Margin (percent)	Cash Deposit Rate (Adjusted for Subsidy Offset(s)) (percent)
Hangzhou Fuxing Spring Co., Ltd.	Hangzhou Fuxing Spring Co., Ltd.	734.33	723.79
Tianjin Gangzhen Auto Parts Co., Ltd.	Hebei Meirui Metals & Minerals Co., Ltd.	734.33	723.79
MFG Direct (Ningbo) Limited	MFG Direct (Ningbo) Limited	734.33	723.79
Tianjin Wangxia Spring Co., Ltd.	Ningbo Well Lift Door Co., Ltd.	734.33	723.79
Hangzhou Fuxing Spring Co., Ltd.	Ningbo Well Lift Door Co., Ltd.	734.33	723.79
Hefei Wangqin Spring Co., Ltd.	Ningbo Well Lift Door Co., Ltd.	734.33	723.79
Tianjin Wangxia Spring Co., Ltd.	Wuxi Jiupie Information Technology Co., Ltd.	734.33	723.79
Wuxi New Fire Technology Co., Ltd.	Wuxi Jiupie Information Technology Co., Ltd.	734.33	723.79
Hangzhou Fuxing Spring Co., Ltd.	Wuxi Jiupie Information Technology Co., Ltd.	734.33	723.79

Producer	Exporter	Weighted- Average Dumping Rate Margin (percent)	Cash Deposit Rate (Adjusted for Subsidy Offset(s)) (percent)
Hangzhou Fuxing Spring Co., Ltd.	Wuxi Kop Door Technology Co., Ltd.	734.33	723.79
China-Wide Entity		778.31*	767.77

* Rate based on facts available with adverse inferences.

Final Subsidy Rates

China

Exporter/Producer	Subsidy Rate (percent)
Tianjin Wangxia Spring Co. Ltd.	257.46*
Foshan Nanhai Xulong Spring Factory	257.46*
Beled Co., Ltd./Beled (Shenzhen) Commerce Co., Ltd.	257.46*
Jiaxing Taike Springs Co., Ltd.	257.46*
Kowloon Metal Spring Factory	257.46*
Ningbo I Promise Import Export	257.46*
Xiamen Globe Truth (GT) Industries	257.46*
All-Others	257.46

* Rate based on facts available with adverse inferences.

Import Statistics

China	2021	2022	2023
Volume (KG)	10,349,252	13,683,368	8,470,488
Value (USD)	\$45,605,881	\$56,311,404	\$34,095,510

Source: U.S. Census Bureau, accessed through S&P Global Trade Atlas (Harmonized Tariff Schedule of the United States (HTSUS) subheadings 7320.20.5020, 7320.20.5045, and 7320.20.5060). Imports of overhead door springs enter under HTSUS subheadings that may cover subject and non-subject merchandise. Therefore, publicly available import data may not accurately reflect actual imports of overhead door springs covered by the scope of the investigations.

Next Steps

- The International Trade Commission (ITC) is running a concurrent injury determination. For more information related to the ITC's timeline, please refer to the [ITC's calendar](#).
- In the event of an affirmative ITC final determination, Commerce will issue the AD/CVD order which is expected to be published in the Federal Register on or about October 2, 2025.

Other Case Information

- The petitioners are IDC Group, Inc. (Minneapolis, MN); Iowa Spring Manufacturing, Inc. (Adel, IA); and Service Spring Corp. (Maumee, OH).
- For general information and next steps, please refer to [a list of FAQs for the final determination](#).
- Additional case information, including the scope of the investigations, is on file electronically via Enforcement and Compliance's Antidumping and Countervailing Duty Centralized Electronic Service System (ACCESS). Once you [log in](#), please refer to case numbers: A-570-186 and C-570-187.
- To date, Commerce maintains 777 AD and CVD orders that provide relief to American companies and industries impacted by unfair trade.