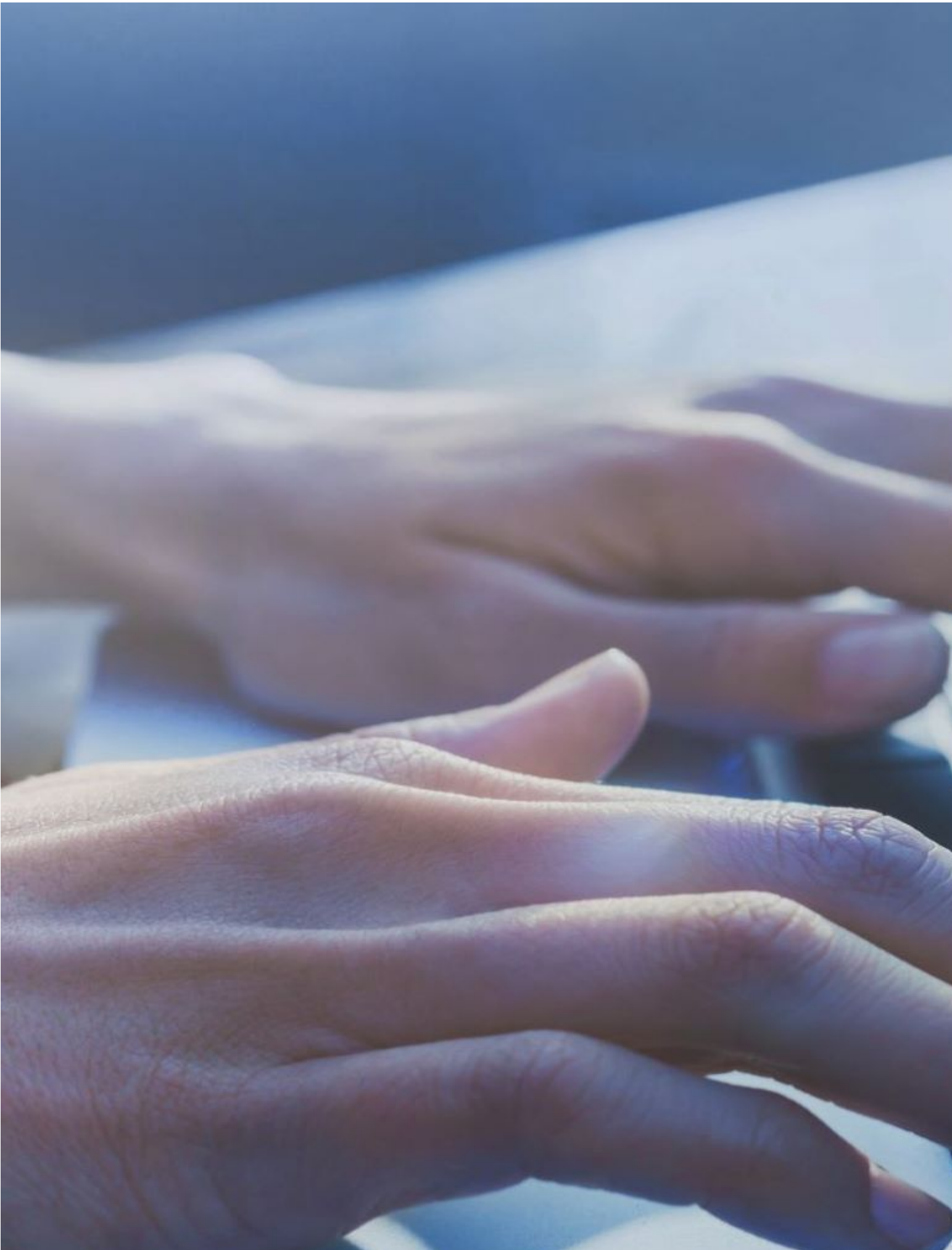




U.S. Antidumping and Countervailing Duties

Information and Resources for U.S. Trade Remedy Laws and Ongoing Proceedings.



AD/CVD FAQs

Get the answers to the most commonly asked questions.

[AD/CVD FAQs](#)





Preliminary Affirmative Determination in the Countervailing Duty Investigation of Temporary Steel Fencing from the People’s Republic of China

Preliminary Affirmative Determination in the Countervailing Duty Investigation of Temporary Steel Fencing from the People’s Republic of China.

On June 17, 2025, the U.S. Department of Commerce (Commerce) announced its preliminary affirmative determination in the countervailing duty (CVD) investigation of temporary steel fencing from the People’s Republic of China (China). Commerce is also conducting a concurrent [antidumping duty \(AD\) investigation](#) of temporary steel fencing from China.

Preliminary Subsidy Rates

Exporter/Producer	Subsidy Rates (percent)
Hebei Minmetals Co., Ltd.	33.27
Shijiazhuang SD Company Ltd.	139.20
Anping County Xingpeng Hardware Co., Ltd.	301.83*
Shenzhou Yuelel Metal Products Co., Ltd.	301.83*
Sichuan Gold-Link Industry	301.83*
Sourcing Solution Co., Ltd.	301.83*
Tianjin Mengsheng Metal Products	301.83*
All-Others	86.24

*Rate based on facts available with adverse inferences.

Case Calendar

EVENT	CVD INVESTIGATION
-------	-------------------

Petition(s) Filed	January 15, 2025
Commerce Initiation Date	February 4, 2025
ITC Preliminary Determinations*	March 3, 2025
Commerce Preliminary Determinations	June 16, 2025
Commerce Final Determinations	October 27, 2025
ITC Final Determinations*	August 8, 2025
Issuance of Orders**	August 15, 2025

NOTE: Commerce's preliminary and final determination deadlines are governed by statute. For CVD investigations, the deadlines are set forth in sections 703(b) and 705(a)(1) of the Tariff Act of 1930, as amended (the Act). These deadlines may be extended under certain circumstances.

* This will take place only in the event of an affirmative determination from Commerce.

** This will take place only in the event of final affirmative determinations from Commerce and ITC.

Import Statistics

China	2021	2022	2023
Volume (KG)	281,368,028	298,736,276	254,147,527
Value (USD)	\$533,098,998	\$617,899,125	\$487,027,273

Source: U.S. Census Bureau, accessed through S&P Global Trade Atlas (Harmonized Tariff Schedule of the United States (HTSUS) subheading 7308.90.9590. Imports of temporary steel fencing enter under an HTSUS subheading that may cover subject and non-subject merchandise. Therefore, publicly available import data may not accurately reflect actual imports of temporary steel fencing covered by the scope of the investigations.

Other Case Information

- The petitioner is ZND US Inc. (Statesville, NC).
- For general information and next steps, please refer to [a list of preliminary FAQs](#).
- Additional case information, including the scope of the investigations, is on file electronically via Enforcement and Compliance's Antidumping and Countervailing Duty Centralized Electronic Service System (ACCESS). Once you [log in](#), please refer to the following case numbers:

Trading Partner	Countervailing Duty Case Number
China	C-570-199

- For more information on subsidy programs, please refer to the [subsidies enforcement library](#).
- To date, Commerce maintains 758 AD and CVD orders that provide relief to American companies and industries impacted by unfair trade.