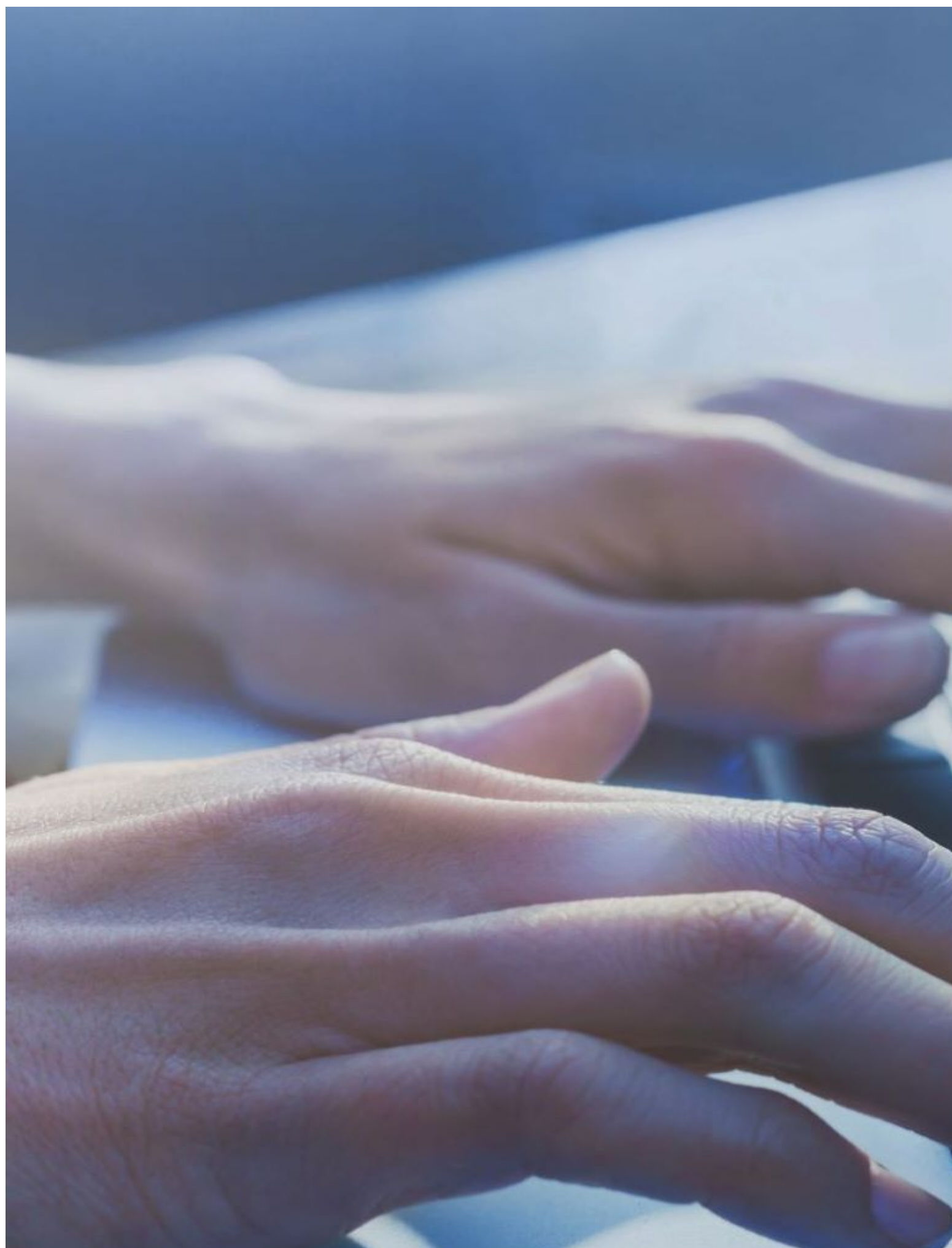




U.S. Antidumping and Countervailing Duties

Information and Resources for U.S. Trade Remedy Laws and Ongoing Proceedings.



AD/CVD FAQs

Get the answers to the most commonly asked questions.

[AD/CVD FAQs](#)





Commerce Initiates Antidumping Duty and Countervailing Duty Investigations of Hardwood and Decorative Plywood from the People’s Republic of China, Indonesia, and the Socialist Republic of Vietnam

Commerce Initiates Antidumping Duty and Countervailing Duty Investigations of Hardwood and Decorative Plywood from the People’s Republic of China, Indonesia, and the Socialist Republic of Vietnam

On June 12, 2025, the U.S. Department of Commerce (Commerce) announced the initiation of antidumping duty (AD) and countervailing duty (CVD) investigations of hardwood and decorative plywood from the People’s Republic of China (China), Indonesia, and the Socialist Republic of Vietnam (Vietnam).

Alleged Dumping Margins

| Trading Partner | Dumping Margins |
|-----------------|-----------------|
| China | 504.07% |
| Indonesia | 84.94% |
| Vietnam | 138.04-152.41% |

Alleged Subsidy Rates

| Trading Partner | Subsidy rates |
|-----------------|---------------------------|
| China | Above <i>de minimis</i> * |
| Indonesia | Above <i>de minimis</i> * |
| Vietnam | Above <i>de minimis</i> * |

**de minimis* = less than one percent for developed countries, less than two percent for developing countries.

| EVENT | AD INVESTIGATIONS | CVD INVESTIGATIONS |
|---|------------------------------|-------------------------------|
| Petition(s) Filed | May 22, 2025 | May 22, 2025 |
| Commerce Initiation Date | June 11, 2025 | June 11, 2025 |
| ITC Preliminary Determinations | July 7, 2025 | July 7, 2025 |
| Commerce Preliminary Determinations *and ** | October 19, 2025 | August 15, 2025 |
| Commerce Final Determinations | January 12, 2026 | October 29, 2025 |
| ITC Final Determinations*** | February 26, 2026 | December 15, 2025 |
| Issuance of Orders**** | March 5, 2026 | December 22, 2025 |

NOTE: Commerce's preliminary and final determination deadlines are governed by statute. For CVD investigations, the deadlines are set forth in sections 703(b) and 705(a)(1) of the Tariff Act of 1930, as amended (the Act). For AD investigations, the deadlines are set forth in sections 733(b) and 735(a) of the Act. These deadlines may be extended under certain circumstances.

* If the International Trade Commission (ITC) makes a negative preliminary determination of injury, then the corresponding AD/CVD investigation(s) will be terminated.

** Where the deadline falls on a weekend/holiday, the appropriate date is the next business day.

*** This will take place only in the event of a final affirmative determination from Commerce.

**** This will take place only in the event of final affirmative determinations from Commerce and the ITC.

Import Statistics

| China | 2022 | 2023 | 2024 |
|--------------------------|---------------|---------------|---------------|
| Volume (m ³) | 108,287 | 122,461 | 154,516 |
| Value (USD) | \$55,160,000 | \$50,057,822 | \$52,919,781 |
| Indonesia | 2022 | 2023 | 2024 |
| Volume (m ³) | 1,010,074 | 658,201 | 787,821 |
| Value (USD) | \$680,632,121 | \$282,499,846 | \$337,587,563 |
| Vietnam | 2022 | 2023 | 2024 |
| Volume (m ³) | 797,871 | 436,183 | 828,767 |
| Value (USD) | \$413,117,106 | \$191,751,365 | \$251,621,163 |

Source: U.S. Census Bureau, accessed through S&P Global Trade Atlas (Harmonized Tariff Schedule of the United States (HTSUS) subheadings 4412.10.0500, 4412.31.0520, 4412.31.0540, 4412.31.0560, 4412.31.0620, 4412.31.0640, 4412.31.0660, 4412.31.2510, 4412.31.2520, 4412.31.2610, 4412.31.2620, 4412.31.4040, 4412.31.4050, 4412.31.4060, 4412.31.4070, 4412.31.4080, 4412.31.4140, 4412.31.4150, 4412.31.4155,

4412.31.4160, 4412.31.4165, 4412.31.4180, 4412.31.4200, 4412.31.4500, 4412.31.4850, 4412.31.4860, 4412.31.4863, 4412.31.4865, 4412.31.4866, 4412.31.4869, 4412.31.4875, 4412.31.4880, 4412.31.5130, 4412.31.5135, 4412.31.5150, 4412.31.5155, 4412.31.5160, 4412.31.5165, 4412.31.5170, 4412.31.5175, 4412.31.5235, 4412.31.5255, 4412.31.5260, 4412.31.5262, 4412.31.5264, 4412.31.5265, 4412.31.5266, 4412.31.5268, 4412.31.5270, 4412.31.5275, 4412.31.6000, 4412.31.6100, 4412.31.9100, 4412.31.9200, 4412.32.0520, 4412.32.0540, 4412.32.0560, 4412.32.0570, 4412.32.0620, 4412.32.0640, 4412.32.0670, 4412.32.2510, 4412.32.2520, 4412.32.2530, 4412.32.2610, 4412.32.2630, 4412.32.3130, 4412.32.3135, 4412.32.3140, 4412.32.3150, 4412.32.3155, 4412.32.3160, 4412.32.3165, 4412.32.3170, 4412.32.3175, 4412.32.3185, 4412.32.3235, 4412.32.3255, 4412.32.3265, 4412.32.3275, 4412.32.3285, 4412.32.5600, 4412.32.5700, 4412.33.0620, 4412.33.0640, 4412.33.0670, 4412.33.2630, 4412.33.3235, 4412.33.3255, 4412.33.3265, 4412.33.3275, 4412.33.3285, 4412.33.5700, 4412.34.2600, 4412.34.3235, 4412.34.3255, 4412.34.3265, 4412.34.3275, 4412.34.3285, 4412.34.5700, 4412.39.4051, 4412.39.4052, 4412.39.4059, 4412.39.4061, 4412.39.4062, 4412.39.4069, 4412.39.5050, 4412.41.0000, 4412.42.0000, 4412.51.1030, 4412.51.1050, 4412.51.3111, 4412.51.3121, 4412.51.3141, 4412.51.3161, 4412.51.3175, 4412.51.4100, 4412.52.1030, 4412.52.1050, 4412.52.3121, 4412.52.3161, 4412.52.3175, 4412.52.4100, 4412.91.0600, 4412.91.1020, 4412.91.1030, 4412.91.1040, 4412.91.3110, 4412.91.3120, 4412.91.3130, 4412.91.3140, 4412.91.3150, 4412.91.3160, 4412.91.3170, 4412.91.4100, 4412.92.0700, 4412.92.1120, 4412.92.1130, 4412.92.1140, 4412.92.3120, 4412.92.3150, 4412.92.3160, 4412.92.3170, 4412.92.4200, 4412.94.1020, 4412.94.1030, 4412.94.1040, 4412.94.1050, 4412.94.3110, 4412.94.3111, 4412.94.3120, 4412.94.3121, 4412.94.3130, 4412.94.3131, 4412.94.3140, 4412.94.3141, 4412.94.3150, 4412.94.3160, 4412.94.3161, 4412.94.3170, 4412.94.3171, 4412.94.3175, 4412.94.4100, 4412.99.0600, 4412.99.1020, 4412.99.1030, 4412.99.1040, 4412.99.3110, 4412.99.3120, 4412.99.3130, 4412.99.3140, 4412.99.3150, 4412.99.3160, 4412.99.3170, 4412.99.4100, 4412.99.5100, 4412.99.5115, 4412.99.5701, 4412.99.5710). The import statistics above may be overstated, as they cover both subject and non-subject merchandise.

Other Case Information

- The petitioner is the Coalition for Fair Trade in Hardwood Plywood, whose members are Columbia Forest Products (Greensboro, NC), Commonwealth Plywood Inc. (Whitehall, NY), Manthei Wood Products (Petoskey, MI), States Industries LLC (Eugene, OR), and Timber Products Company (Springfield, OR). For general information and next steps, please refer to a [list of initiation FAQs](#).
- Additional case information, including the scope of the investigations and alleged subsidy programs, are on file electronically via Enforcement and Compliance's Antidumping and Countervailing Duty Centralized Electronic Service System (ACCESS). Once you [log in](#), please refer to the following case number:

| Trading Partner | AD Case Number | CVD Case Number |
|-----------------|----------------|-----------------|
| China | A-570-211 | C-570-212 |
| Indonesia | A-560-844 | C-560-845 |
| Vietnam | A-552-851 | C-552-852 |

- For more information on subsidy programs, please refer to the [subsidies enforcement library](#).
- To date, Commerce maintains 757 AD and CVD orders that provide relief to American companies and industries impacted by unfair trade.