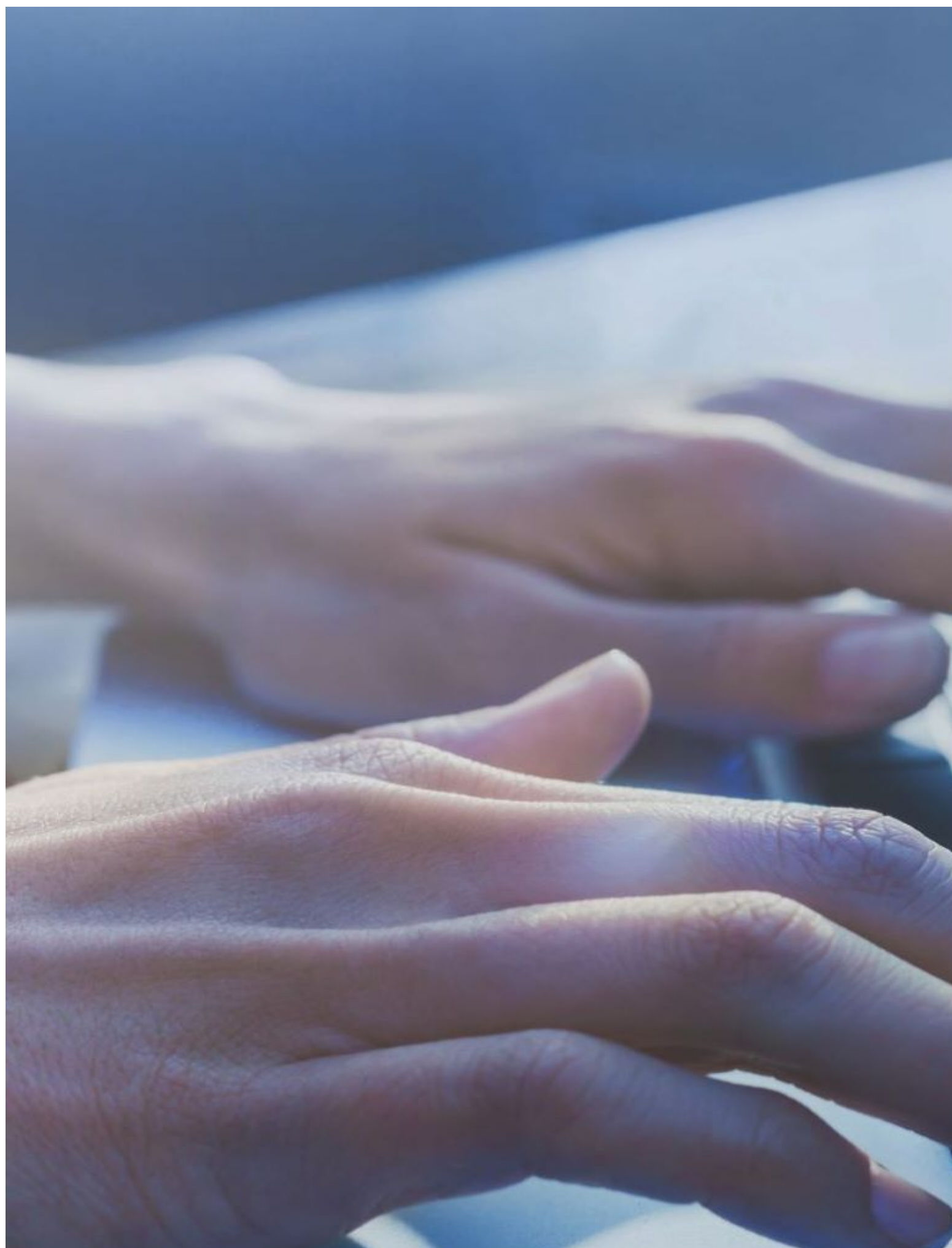




U.S. Antidumping and Countervailing Duties

Information and Resources for U.S. Trade Remedy Laws and Ongoing Proceedings.





AD/CVD FAQs

Get the answers to the most commonly asked questions.

[AD/CVD FAQs](#)





# Commerce Initiates Antidumping and Countervailing Investigations of Temporary Steel Fencing from the People’s Republic of China

## Commerce Initiates Antidumping and Countervailing Investigations of Temporary Steel Fencing from the People’s Republic of China

On February 5, 2025, the U.S. Department of Commerce (Commerce) announced the initiation of antidumping duty (AD) and countervailing duty (CVD) investigations of temporary steel fencing from the People’s Republic of China (China).

### Alleged Dumping Margins

Trading Partner	Dumping Margins (Percent)
China	501.26 - 738.98

### Alleged Subsidy Rates

Trading Partner	Subsidy Rates
China	Above <i>de minimis</i> *

\* *de minimis* = less than 1% for developed countries, less than 2% for developing countries

### Case Calendar

EVENT	AD INVESTIGATION	CVD INVESTIGATION
Petition(s) Filed	January 15, 2025	January 15, 2025
Commerce Initiation Date*	February 4, 2025	February 4, 2025
ITC Preliminary Determinations**	March 3, 2025*	March 3, 2025*
Commerce Preliminary Determinations	June 24, 2025	April 10, 2025

<b>EVENT</b>	<b>AD INVESTIGATION</b>	<b>CVD INVESTIGATION</b>
Commerce Final Determinations	September 8, 2025*	June 24, 2025
ITC Final Determinations***	October 23, 2025	August 8, 2025
Issuance of Orders****	October 30, 2025	August 15, 2025

NOTE: Commerce's preliminary and final determination deadlines are governed by statute. For CVD investigations, the deadlines are set forth in sections 703(b) and 705(a)(1) of the Tariff Act of 1930, as amended (the Act). For AD investigations, the deadlines are set forth in sections 733(b) and 735(a) of the Act. These deadlines may be extended under certain circumstances.

\* Where the deadline falls on a weekend/holiday, the appropriate date is the next business day.

\*\* If the International Trade Commission (ITC) makes a negative preliminary determination of injury, then the corresponding AD/CVD investigation(s) will be terminated.

\*\*\* This will take place only in the event of a final affirmative determination from Commerce.

\*\*\*\* This will take place only in the event of final affirmative determinations from Commerce and the ITC.

### Import Statistics

<b>China</b>	<b>2021</b>	<b>2022</b>	<b>2023</b>
Volume (kg)	281,368,028	298,736,276	254,147,527
Value (USD)	\$533,098,998	\$617,899,125	\$487,027,273

Source: U.S. Census Bureau, accessed through S&P Global Trade Atlas (Harmonized Tariff Schedule of the United States (HTSUS) subheading 7308.90.9590. Imports of temporary steel fencing enter under an HTSUS subheading that may cover subject and non-subject merchandise. Therefore, publicly available import data may not accurately reflect actual imports of temporary steel fencing covered by the scope of the investigations.

### Other Case Information

- The petitioner is ZND US Inc. (Statesville, NC).
- For general information and next steps, please refer to a [list of initiation FAQs](#).
- Additional case information, including the scope of the investigations and alleged subsidy programs, are on file electronically via Enforcement and Compliance's Antidumping and Countervailing Duty Centralized Electronic Service System (ACCESS). Once you [log in](#), please refer to the following case numbers:

<b>Trading Partner</b>	<b>AD Case Number</b>	<b>CVD Case Number</b>
China	A-570-198	C-570-199

- For more information on subsidy programs, please refer to the [subsidies enforcement library](#).
- To date, Commerce maintains 728 AD and CVD orders that provide relief to American companies and industries impacted by unfair trade.