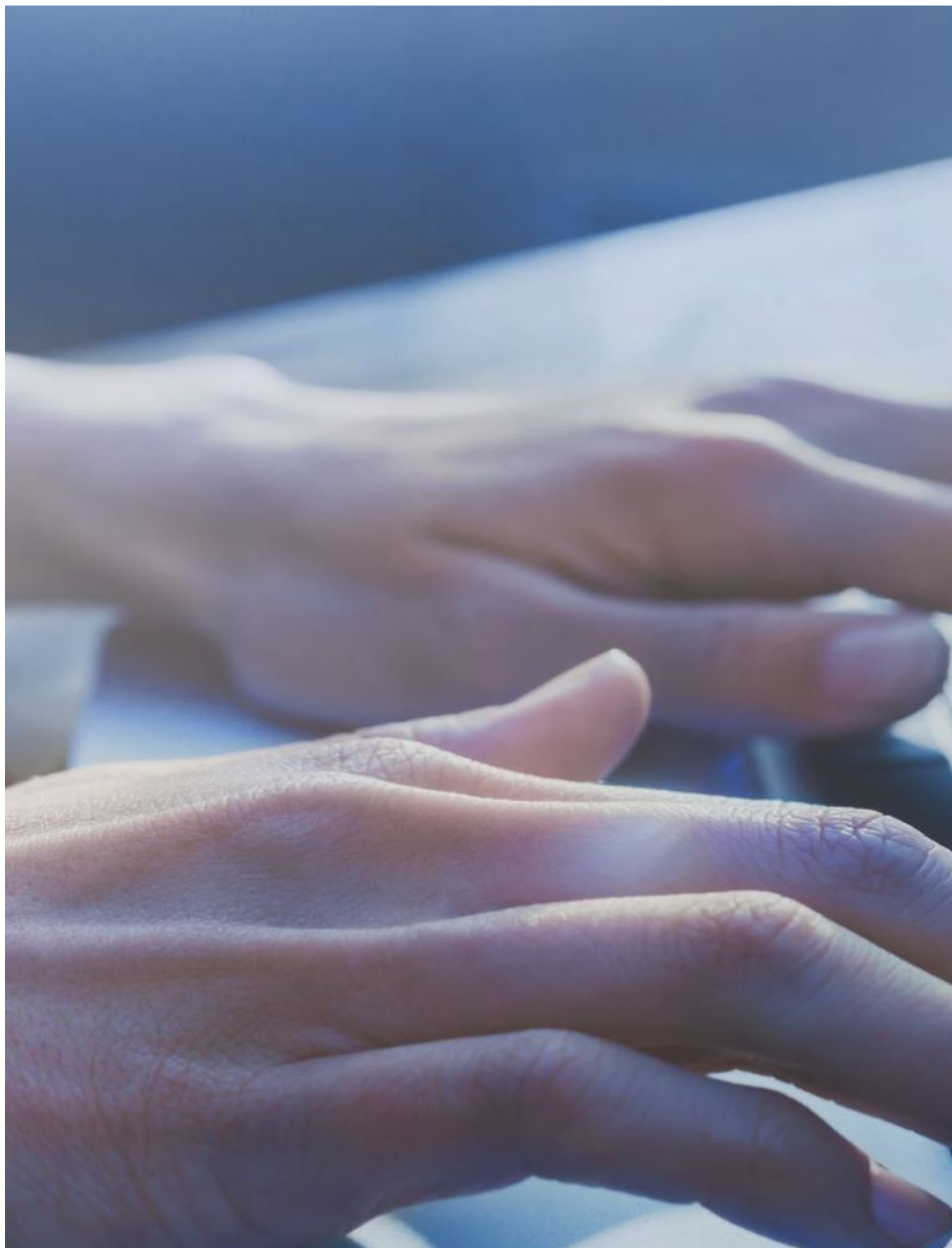




U.S. Antidumping and Countervailing Duties

Information and Resources for U.S. Trade Remedy Laws and Ongoing Proceedings.



AD/CVD FAQs

Get the answers to the most commonly asked questions.

[AD/CVD FAQs](#)



Initiation of AD and CVD Investigations of Active Anode Material from China

Commerce Initiates Antidumping and Countervailing Duty Investigations of Active Anode Material from the People’s Republic of China

On January 8, 2025, the U.S. Department of Commerce (Commerce) announced the initiation of antidumping duty (AD) and countervailing duty (CVD) investigations of Active Anode Material from the People’s Republic of China (China).

Alleged Dumping Margins

Trading Partner	Dumping Margins (Percent)
China	823.40-915.74

Alleged Subsidy Rates

Trading Partner	Subsidy Rates
China	Above <i>de minimis</i> *

* *de minimis* = less than 1% for developed countries, less than 2% for developing countries

Case Calendar

EVENT	AD INVESTIGATION	CVD INVESTIGATION
Petition(s) Filed	December 18, 2024	December 18, 2024
Commerce Initiation Date ¹	January 7, 2025	January 7, 2025
ITC Preliminary Determinations*	February 3, 2025	February 3, 2025
Commerce Preliminary Determinations	May 27, 2025	March 13, 2025

EVENT	AD INVESTIGATION	CVD INVESTIGATION
Commerce Final Determinations	August 11, 2025	May 27, 2025
ITC Final Determinations**	September 25, 2025	July 11, 2025
Issuance of Orders***	October 2, 2025	July 18, 2025

NOTE: Commerce’s preliminary and final determination deadlines are governed by statute. For CVD investigations, the deadlines are set forth in sections 703(b) and 705(a)(1) of the Tariff Act of 1930, as amended (the Act). For AD investigations, the deadlines are set forth in sections 733(b) and 735(a) of the Act. These deadlines may be extended under certain circumstances.

* If the International Trade Commission (ITC) makes a negative preliminary determination of injury, then the corresponding AD/CVD investigation(s) will be terminated.

** This will take place only in the event of a final affirmative determination from Commerce.

*** This will take place only in the event of final affirmative determinations from Commerce and the ITC.

¹ Note that the deadline for Commerce to issue its initiation decision was extended by 20 days to allow for polling of the domestic industry. See Notice of Extension of the Deadline for Determining the Adequacy of the Antidumping and Countervailing Duty Petitions: Sol Gel Alumina-Based Ceramic Abrasive Grains from the People’s Republic of China, 89 FR 100465 (December 12, 2024).

Import Statistics

China	2021	2022	2023
Value (KG)	60,988,257	103,508,617	84,290,595
Value (USD)	143,290,236	380,172,162	347,108,288

Source: U.S. Census Bureau, accessed through S&P Global Trade Atlas (Harmonized Tariff Schedule of the United States (HTSUS) subheadings 2504.10.5000 and 3801.10.5000). Imports of active anode material enter under HTSUS subheadings that cover subject and non-subject merchandise; therefore, the above imports may be overstated.

Other Case Information

- The petitioner is the American Active Anode Material Producers, which is an ad hoc coalition comprised of Anovion Technologies (Sanborn, NY), Syrah Technologies LLC (Vidalia, LA), NOVONIX Anode Materials LLC (Chattanooga, TN), Epsilon Advanced Materials (Leland, NC), and SKI US, Inc. (Marietta, GA).
- For general information and next steps, please refer to a [list of initiation FAQs](#).
- Additional case information, including the scope of the investigations and alleged subsidy programs, are on file electronically via Enforcement and Compliance’s Antidumping and Countervailing Duty Centralized Electronic Service System (ACCESS). Once you [log in](#), please refer to the following case numbers:

Trading Partner	AD Case Number	CVD Case Number
China	A-570-194	C-570-195

- For more information on subsidy programs, please refer to the [subsidies enforcement library](#).
- To date, Commerce maintains 721 AD and CVD orders that provide relief to American companies and industries impacted by unfair trade.