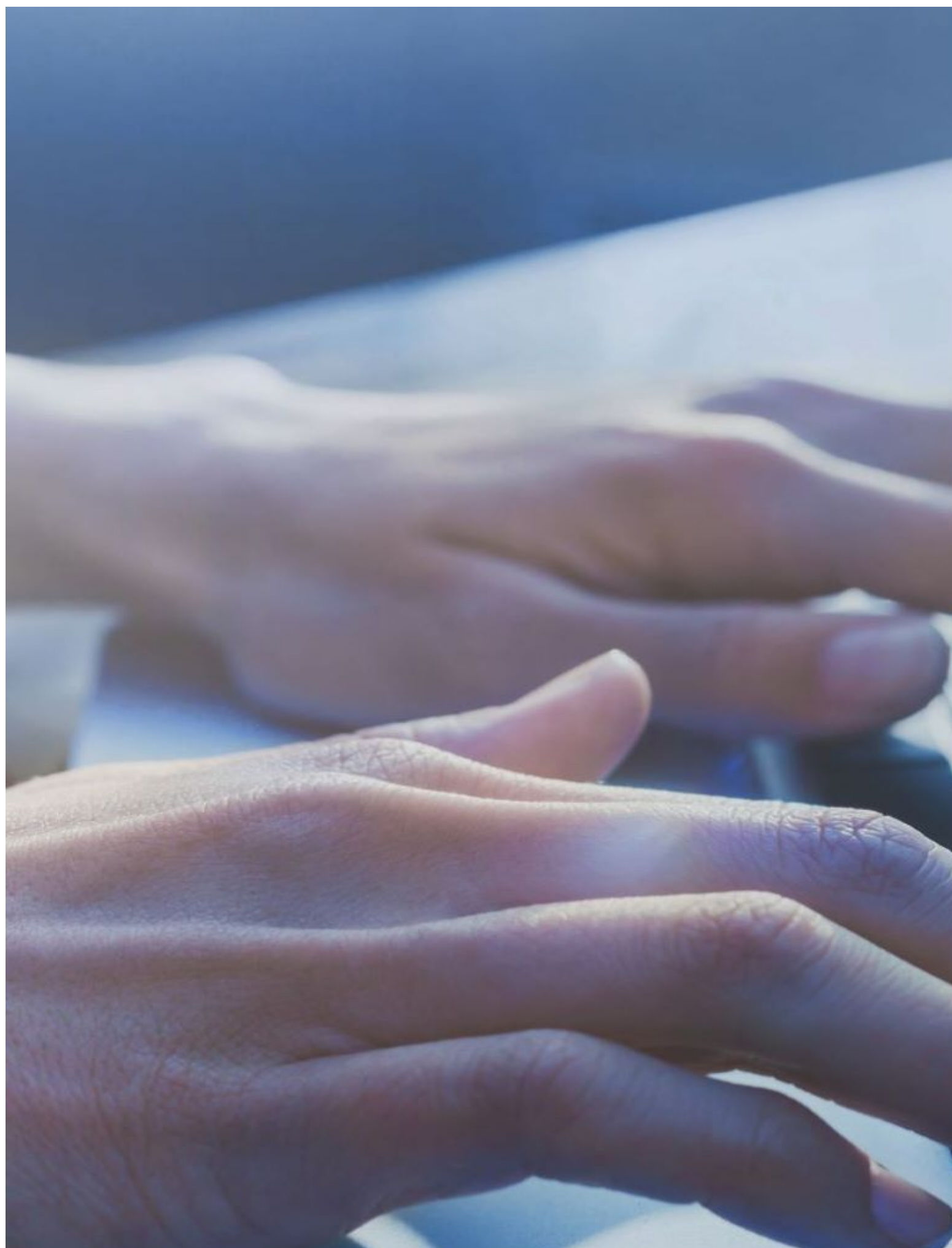




U.S. Antidumping and Countervailing Duties

Information and Resources for U.S. Trade Remedy Laws and Ongoing Proceedings.





AD/CVD FAQs

Get the answers to the most commonly asked questions.

[AD/CVD FAQs](#)







# Initiation of AD and CVD Investigations of Erythritol from China

## Commerce Initiates Antidumping and Countervailing Duty Investigations of Erythritol from the People’s Republic of China

On January 3, 2025, the U.S. Department of Commerce (Commerce) announced the initiation of antidumping duty (AD) and countervailing duty (CVD) investigations of erythritol from the People’s Republic of China (China).

### Alleged Dumping Margins

Trading Partner	Dumping Margins
China	270.00-450.64%

### Alleged Subsidy Rates

Trading Partner	Subsidy Rates
China	Above de minimis*

\* de minimis = less than 1% for developed countries, less than 2% for developing countries

### Case Calendar

EVENT	AD INVESTIGATIONS	CVD INVESTIGATIONS
Petition(s) Filed	December 13, 2024	December 13, 2024
Commerce Initiation Date	January 2, 2025	January 2, 2025
ITC Preliminary Determinations*	January 27, 2025	January 27, 2025
Commerce Preliminary Determinations	May 22, 2025	March 10, 2025
Commerce Final Determinations	August 5, 2025	May 27, 2025

<b>EVENT</b>	<b>AD INVESTIGATIONS</b>	<b>CVD INVESTIGATIONS</b>
ITC Final Determinations**	September 19, 2025	July 11, 2025
Issuance of Orders***	September 26, 2025	July 18, 2025

NOTE: Commerce's preliminary and final determination deadlines are governed by statute. For CVD investigations, the deadlines are set forth in sections 703(b) and 705(a)(1) of the Tariff Act of 1930, as amended (the Act). For AD investigations, the deadlines are set forth in sections 733(b) and 735(a) of the Act. These deadlines may be extended under certain circumstances.

\* If the International Trade Commission (ITC) makes a negative preliminary determination of injury, then the corresponding AD/CVD investigation(s) will be terminated.

\*\* This will take place only in the event of a final affirmative determination from Commerce.

\*\*\* This will take place only in the event of final affirmative determinations from Commerce and the ITC.

### Import Statistics

<b>China</b>	<b>2021</b>	<b>2022</b>	<b>2023</b>
Value (KG)	34,199,404	22,403,423	17,249,522
Value (USD)	102,585,813	55,396,921	27,215,940

Source: U.S. Census Bureau, accessed through S&P Global Trade Atlas (Harmonized Tariff Schedule of the United States (HTSUS) subheading 2905.49.4000).

### Other Case Information

- The petitioner is Cargill, Incorporated (Wayzata, MN).
- For general information and next steps, please refer to a [list of initiation FAQs](#).
- Additional case information, including the scope of the investigations and alleged subsidy programs, are on file electronically via Enforcement and Compliance's Antidumping and Countervailing Duty Centralized Electronic Service System (ACCESS). Once you [log in](#), please refer to the following case numbers:

<b>Trading Partner</b>	<b>AD Case Number</b>	<b>CVD Case Number</b>
China	A-570-192	C-570-193

- For more information on subsidy programs, please refer to the [subsidies enforcement library](#).
- To date, Commerce maintains 721 AD and CVD orders that provide relief to American companies and industries impacted by unfair trade.