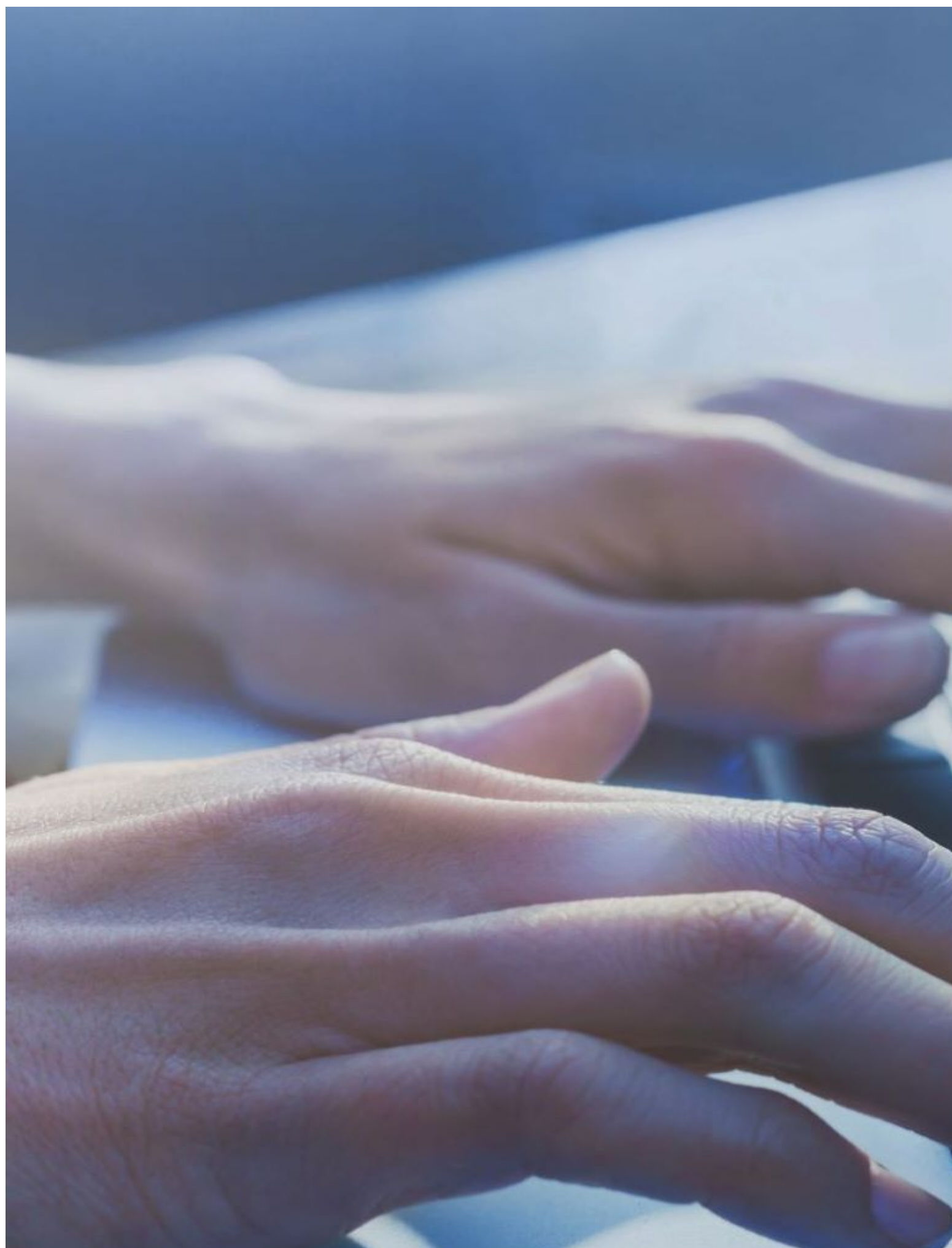




U.S. Antidumping and Countervailing Duties

Information and Resources for U.S. Trade Remedy Laws and Ongoing Proceedings.



AD/CVD FAQs

Get the answers to the most commonly asked questions.

[AD/CVD FAQs](#)



Recent Case Announcements

View a list of our recent AD/CVD case announcements.

[Recent Announcements](#)



Preliminary Determination in the AD Investigation of Certain Freight Rail Couplers from China

Commerce Preliminarily Finds Dumping of Certain Freight Rail Couplers and Parts Thereof from China

On March 8, 2023, the Department of Commerce (Commerce) announced its affirmative preliminary determination in the antidumping duty (AD) investigation of certain freight rail couplers and parts thereof (freight rail couplers) from China.

PRELIMINARY DUMPING RATE:

COUNTRY	EXPORTER/PRODUCER	DUMPING RATE
China	China-wide Entity	169.90%

CASE CALENDAR:

EVENT	AD INVESTIGATION
Petition Filed	September 28, 2022
DOC Initiation Date	October 18, 2022
ITC Preliminary Determination	November 14, 2022
DOC Preliminary Determination	March 7, 2023
DOC Final Determination	May 22, 2023
ITC Final Determination	July 6, 2023
Issuance of Order**	July 13, 2023

NOTE: Commerce preliminary and final determination deadlines are governed by statute. For AD investigations, the deadlines are set forth in sections 733(b) and 735(a)(1) of the Tariff Act of 1930, as amended.

**This will take place only in the event of affirmative final determinations from Commerce and the International Trade Commission (ITC).

IMPORT STATISTICS:

CHINA	2019	2020	2021
Volume (KG)	22,906,629	11,924,947	15,231,536
Value (USD)	\$55,125,601	\$27,949,072	\$35,198,364

Source: U.S. Census Bureau, accessed through IHS Markit's Global Trade Atlas (Harmonized Tariff Schedule of the United States (HTSUS) subheading 8607.30.1000). Imports of freight rail couplers enter under an HTSUS subheading that covers subject and non-subject merchandise. In addition, unfinished merchandise or merchandise that is imported attached to finished rail cars may enter under other HTSUS subheadings. Therefore, publicly available import data may not accurately reflect actual imports of the freight rail couplers covered by the scope of the investigation.

Other Case Information

- The petitioner is the Coalition of Freight Coupler Producers, the members of which are McConway and Torley, LLC (M&T) (Pittsburgh, PA) and the United Steel, Paper and Forestry, U.S. Department of Commerce | International Trade Administration | Enforcement and Compliance
- Rubber, Manufacturing, Energy, Allied Industrial and Service Workers International Union, AFL-CIO, CLC (the USW) (Washington, DC).
- For general information and next steps, please refer to a [list of preliminary FAQs](#).
- Additional case information, including the scope of the investigations, is on file electronically via Enforcement and Compliance's Antidumping and Countervailing Duty Centralized Electronic Service System (ACCESS). Once you [log in](#), please refer to case number: A-570-145.
- To date, Commerce maintains 665 AD and countervailing duty orders which provide relief to American companies and industries impacted by unfair trade.