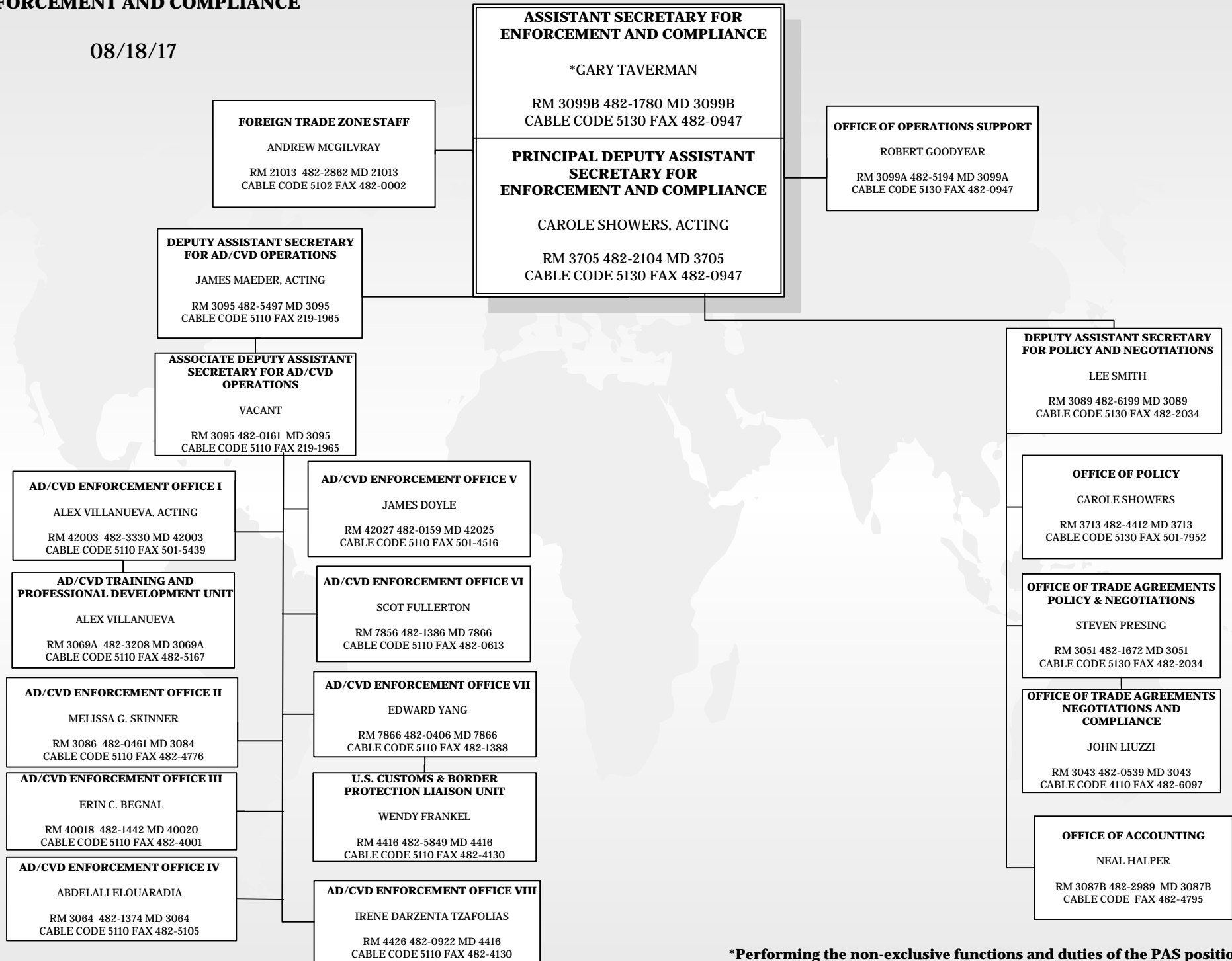


**ENFORCEMENT AND COMPLIANCE**

08/18/17



**\*Performing the non-exclusive functions and duties of the PAS position.**

**NOTE: This is a working document and represents the ITA office-level organizational structure. Some persons are designated as acting pending the completion of personnel actions. This chart depicts only persons for which personnel actions have been submitted.**

SOURCE: Management Operations Division