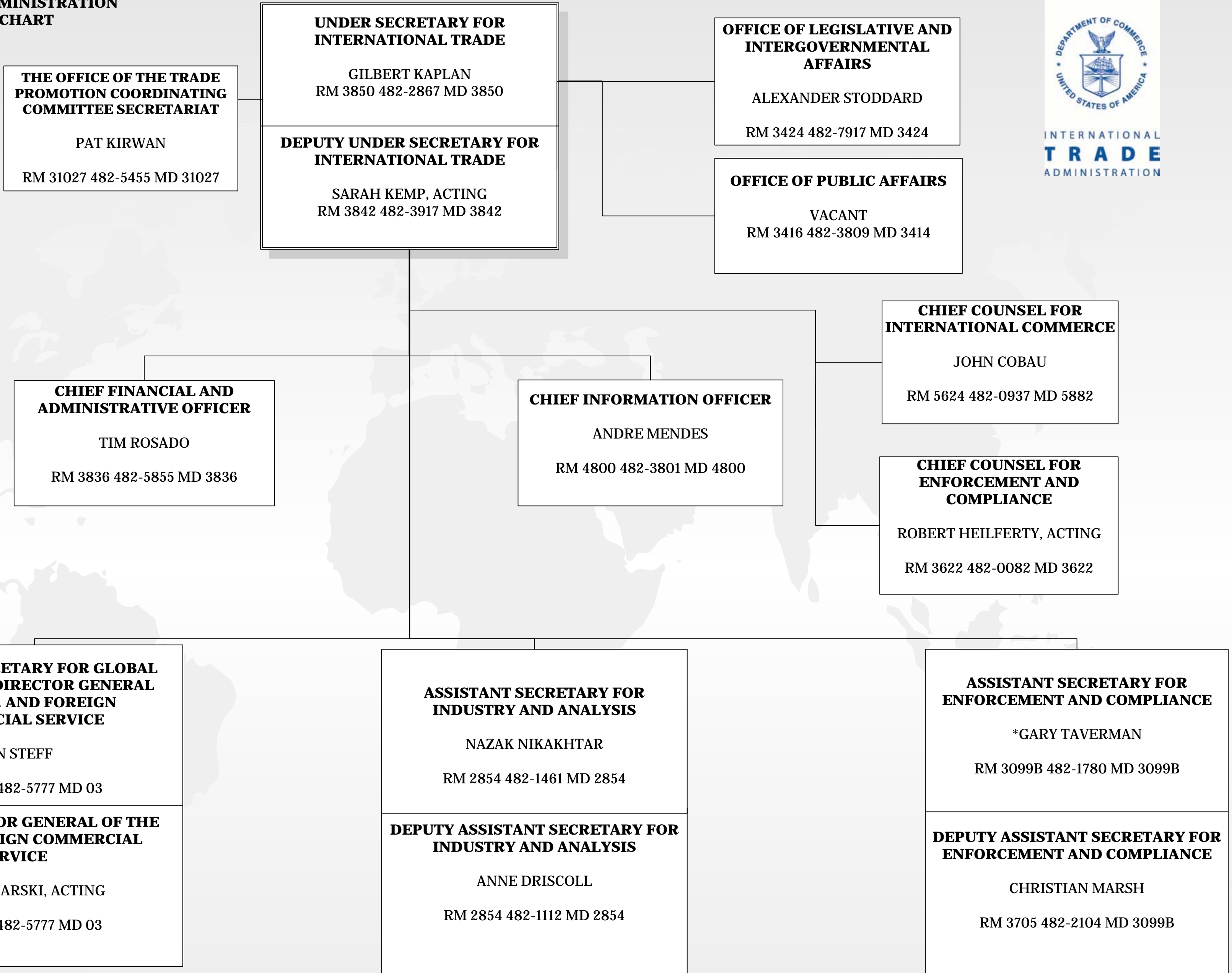


**U.S. DEPARTMENT OF COMMERCE  
INTERNATIONAL TRADE ADMINISTRATION  
WORK REFERENCE CHART**

10/31/18



**\*Performing the non-exclusive functions and duties of the PAS position.**

NOTE: This is a working document and represents the ITA office-level organizational structure. Some persons are designated as acting pending the completion of personnel actions. This chart depicts only persons for which personnel actions have been submitted.

SOURCE: Chief Financial and Administrative Officer, Management Operations Division